

Project of "Translator"

Rambler Times -International Edition-

This booklet titled "Rambler Times -International Edition-" is the first booklet made for international students under the "Translator" Project by the Kobe University CO-OP Student Committee. Based on an opinion survey on foreign students, out of the numerous articles we have written so far, 10 articles have been selected from previous issues of "Rambler Times" and "Uribo" to be translated into English for international students. The Kobe University CO-OP is a nonprofit CO-OPERative organization composed of Kobe University undergraduates, graduate students, staff, and faculty. The CO-OP handles a diversity of services that will help with your student life, such as purchasing food, daily supplies, textbooks, study materials, computers, tickets for domestic and overseas travels, and even finding housing, in addition to various other services that make everyone's student life more fulfilling. "Rambler Times" is Kobe University CO-OP's bulletin which is issued four times a year by the CO-OP Student Committee. It contains information that makes university life more enjoyable, such as recommended spots and unique ways to spend your free time. "Uribo" is a booklet issued on a yearly basis for freshmen who are scheduled to enter Kobe University. Urabe summarizes various information to help resolve concerns of starting university life while raising their expectations on what lies ahead. We hope this book will be helpful to those who pursue a better university life.



Editors

T.YUTA, N.SAYAKA

A.NANAMI, K.KAITO, F.NODOKA

The Best Selection of "Rambler Times" and "Uribo" 2016-2018

Rambler Times

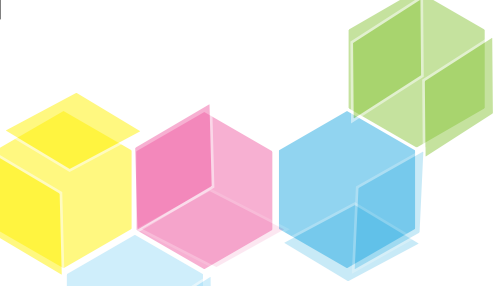
International Edition



10 articles in color

28 pages

Written for International Students in Kobe University



Ramblar Times

~International Edition~

Contents

04 One year of Kobe Univ. students

We've compiled Kobe Univ's events and seasonal events.

08 Rokko Town map

We introduce a stylish café in Rokko and the useful supermarket for everyday life.

11 Free Cafe @Rokko

There are useful free cafés that you can use for resting place and study.

12 Japanese traditional sweets

Familiar with the Japanese spirit “wa” .

Please enjoy the aroma of green tea at home.

14 Power Spots

We introduce the power spot you can visit easily, where you can feel the mysterious power.

20 The night of view @Kobe

There are a lot of beautiful night views in Kobe!

Why don't you step into the world of light that shines beautifully?

22 University life with CO-OP

Do you know the Kobe University CO-OP? In fact, it is responsible for the operation of the various facilities you use.

24 LANS HALAL Vege Dining

There is a cafeteria offering halal, vegetarian(vegan), and gluten free dishesmenu for international students in Kobe Univ.

25 Coop meals plus

With a little ingenuity, you can find out new taste of usual menu.

26 What is “GI” ?

This page is the introduction of us who have issued this booklet.

If you are interested, please read it.



Let's Prepare!

One year of Kobe Univ. students

The season of the beginning. University is full of vigor(^-^)/

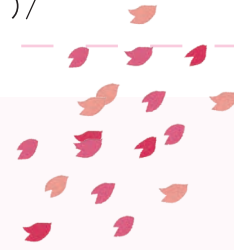
Spring



Freshmen Welcoming Festival

~Find the circle of fate!~

It is a festival for freshmen that exhibits more than 200 organizations every year. Every year a great amount of new students visit. Please participate by all means♪



"Cheese!" with spiritual clothes!



Picnic of freshmen welcome event♪

Enrollment

~University life starting from here~
Approximately 5,000 people will attend each year including parents.
After the entrance ceremony, many faculties will have an orientation, so be sure to check the information!



Beautiful cherry blossom trees



The suited figure looks great on you!



Experience boarding @Fukaefestival

Fukae Festival

~Festival of the people of the sea~
It is the department festival of the maritime science department. Many events such as experience boarding, simulated shops, etc. are held. And this time, we have a chance to learn more deeply about the research of this department that we cannot usually see!!



Summer



Summer Vacation

~It's summer! Very long!~
Summer vacation at Kobe University is about 2 months! Enjoyment will not stop! Save money by working for a bit, keep working on circle activities and studies, and let's have the best summer ever!



Yukata



The Star Festival

~Families at the main campus~
Summer festival will be held at the Rokkodai campus. Not only booths, also you can enjoy stage events and experiential attractions! Amidst the fantastic space decoration unique to The Star festival, the atmosphere is also exotic as there are many people who wear YUKATA.

schedule

- June
 - 1Q exam
- July
 - The star festival
- August
 - 2Q exam
 - Start summer vacation
- September
 - Previous term results announcement



Cycling now!



With a big smile(*^^*)



Speaking of summer "sea!"



A little break.



Fireworks Festival

~Awesome excitement~
Many firework festivals such as Minato Kobe fireworks festival and Yodogawa fireworks festival are held in the summer close to the Kobe Univ. People go with friends, or lovers, and have a great time.

Autumn

Myoudani Festival

~Welcome to Department of Health~

It is a festival of the Department of Health Sciences of the School of Medicine. Each department stores will be opened for each regeneration, and stage planning. Last fiscal year there was a student wear ikemen contest...!?



schedule

October

- Late term (3Q, 4Q) Start

- Myoudani festival
- Freshmen welcoming festival in Fall

November

- Rokko Festival
- Okurayama festival
- 3Q exam

Freshmen welcoming festival in Fall

~Seeking new encounters~

Many circles are also participating in autumn welcoming festival seeking a new club member. Approximately 1,000 people of Kobe university are visiting, and they are showing great bustle.



Rokko Festival

~Kobe univ. Maximum event!~

It is the biggest school festival of Kobe University, which will be held for 2 days. In a store with various circles, things that are only likely to be delicious are sold, so you will get lost as to which to buy.



Must see a professional concert!



Lecture by famous people

Enriching stage events ♪



Okurayama Festival

~Invitation to the medical department~

It is a school festival of the medical department of medicine which is done near the Okurayama campus.

You can enjoy the performance of the medical department's circle and, enjoy contents that are slightly different from the Rokko Festival such as divination and health lands (^o^)



Call you out on a costume!



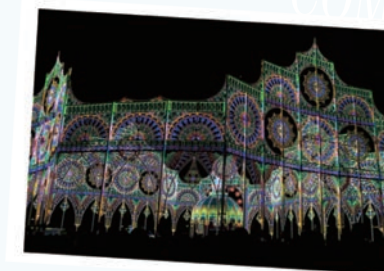
Winter



COMING SOON

Luminarie ~Art work of light~

Among many Kobe events, Kobe Luminarie is also famous. The theme of the spirit of the victims of the great earthquake and the theme of hope for the revival and rebirth of the city are included. Many college students visit each year to see the works of art of this light.



schedule

December

- Winter vacation begins!

February

- 4Q exam
- Spring vacation begins!



X'mas party



To Hatsumode

Spring vacation

~How you spend depends on you!~

Spring vacation is the longest holiday at Kobe University. You may study abroad or focus on circle activities. Some people aim for Hokkaido with hitchhiking and those who start up during spring break! Also, many circles and club activities prepare for welcoming freshmen in April.



Annual schedule digest ~Let's review~

Spring

- Freshmen Welcoming festival
- Enrollment
- 1Q start
- 2Q start

Summer

- Summer vacation
- Fireworks festival

Autumn

- 3Q start
- Freshmen welcoming festival in Fall
- Roko festival

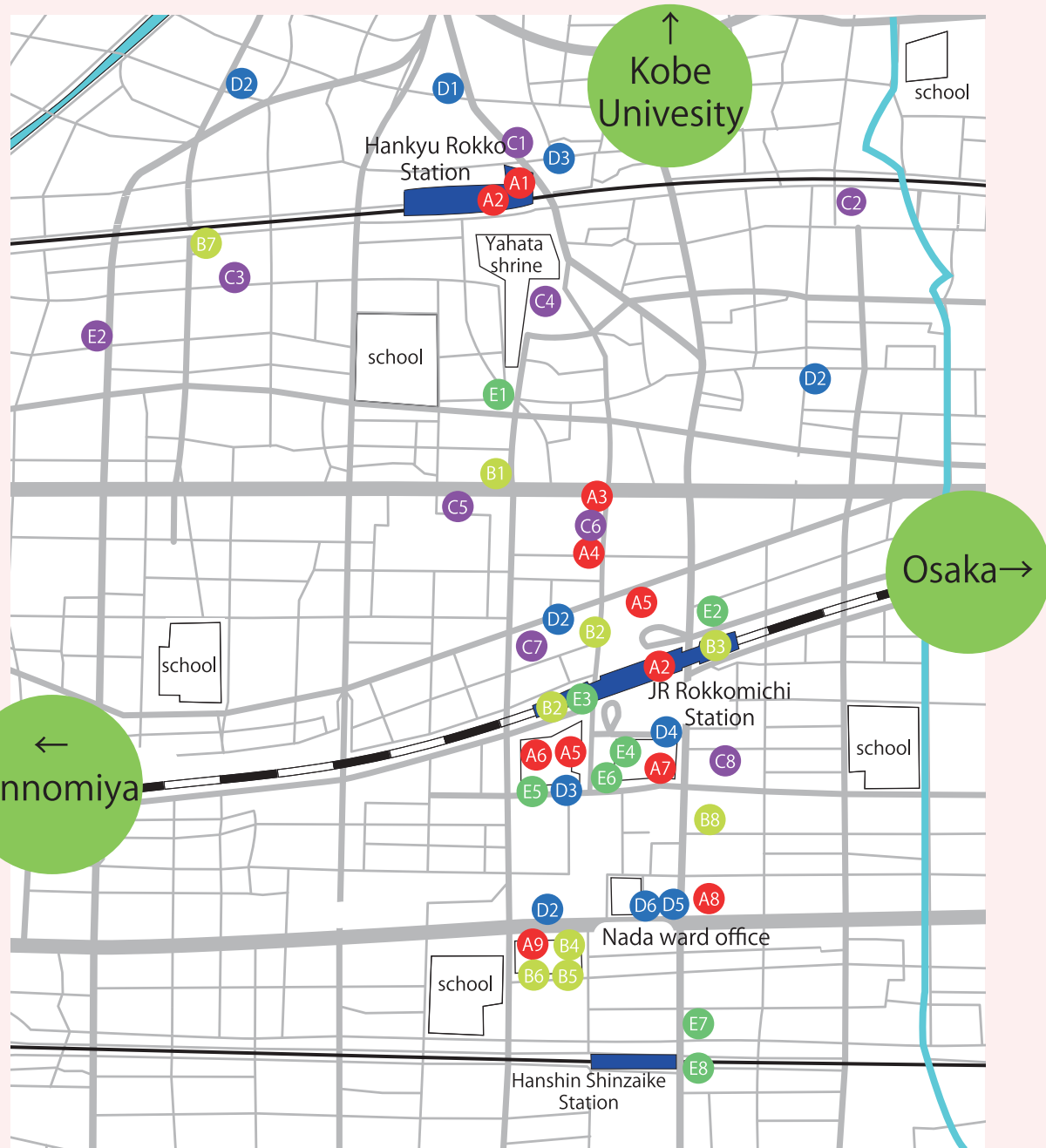
Winter

- Winter vacation
- 4Q start
- Spring vacation

This is a perfect preparation for one year!
But, one year is different depending on the person!
Please spend your fulfilling days ♪

Rokko Town

You may be worried about your new life in Rokko town. I introduce the places necessary for daily life, such as supermarkets, hospitals and restaurants. Please check it out.



- Groceries
Daily wants
- Amusement
- Hospital
- Bank・ATM
- Restaurant

- A1.Hankyu OASIS
- A2.Kokumin
- A3.Coop Rokko
- A4.MIYAMAE
- A5.Daikoku Drug
- A6.TOHO
- A7.Gurumecity
- A8.Meguminosato
- A9.Matsumotokiyoshi

- B1.GEO
- B2.Jankara
- B3.TSUTAYA
- B4.COTE D'AZUR
- B5.ROKKO BOWL
- B6.Furuhon Ichiba
- B7.Fuji Onsen
- B8.Nada Onsen

- C1.Fujimura Orthopedics
- C2.Mishima Dental Clinic
- C3.Matsumoto Clinic
- C4.Sekimoto Clinic
- C5.Li Internal medicine Clinic
- C6.Suzuki Ophthalmology Clinic
- C7.Internal medicine Akasaka Clinic
- C8.Nishi Clinic

- D1.Ikeda Sensyu Bank
- D2.Yutyo ATM
- D3.Mitsui Sumitomo Bank
- D4.Minato Bank
- D5.Kyoto Bank
- D6.Mitsubishi Sumitomo UFJ Bank

- E1.Amanatsu Syokudo
- E2.Hikyū
- E3.Morutobono
- E4.Bokunofuraipan
- E5.Yamada Syokudo
- E6.Ryuko
- E7.Ipposhi
- E8.Komefuku

TOHO

A supermarket used by many Kobe university students



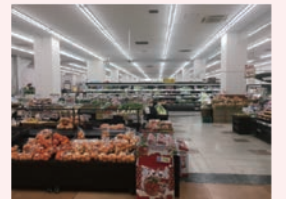
A supermarket supporting students

Kobe university students will definitely use "TOHO" once in four years college life. It has a large selection ranging from fresh foods to prepared dishes, and you can buy them at a good price. It is located a little south of Rokkomichi station, which is very convenient in terms of access. This store is a strong ally of the university students.



◀ **selection of goods in TOHO**
It has a wide variety of goods such as seafood, daily dish and so on.

▶ **Inside the store**
You can do shopping smoothly in a big store. And you will be able to buy most of things you want!



Amanatsu Syokudo

You can have comfort food



Enjoy gentle tastes in the homely space

This "Amanatsu Syokudo" is standing near the Hankyu Rokko like a hideaway. It was renovated in 2017 and its interior is nice. And it has a relaxed atmosphere. Popular menus are "Japanese style set menu" and "Western style set menu". Their contents vary from day to day, which is very attractive. Of course, all the menus are excellent and you will want to go through many times.



◀ **Western style set menu (850yen)**
Roast beef and chicken cutlets were served on this day. Chicken cutlets were crispy and juicy, and the demi-glace sauce tasted good. Roast beef matched rice very much.



◀ **Japanese style set menu (850yen)**
Ginger pork stir-fry was salty-sweet and meat and potato stew was soft and flaky texture and they matched rice very much! It was completely different from western style set, so I admired master's advanced skills.

The ramen filled with owner's passion

Going south from Rokkomichi, the one near the Hanshin shinzaike is "Ipposhi". It is a popular shop and there is often a line. You can enjoy great ramen which is cooked elaborately. This time I will introduce menus of "Ipposhi"! Let's find out a lot about ramen shop around Kobe University and tell it to your friends!
※ It will be closed due to running out of soup.



◀ **Chashu ramen (950yen)**
This ramen consists of chewy noodles and rich chicken soup. Further more, a lot of chashu on the noodles are excellent! If you fancy rich meal, you should eat it!



◀ **Chashu-don (300yen)**
Charred and roasted Chashu goes well with rice. You'll be able to feel the owner's enthusiasm from the good tastes of side menu too!



Ipposhi

One of the most popular ramen shops

Melon de melon
Rokkomichi store
Melonpan
speciality store



Stop by casually and eat easilly

"Melon de melon" is a bakery specializes an melonpan. Overall the sweetness is modest, the deliciousness loved by men and women of all ages. While authentic texture and taste, plain is 190 yen, other melonpans are 210 yen, so you can buy them easily. In addition to melon pans, there are also apple pies and croissants, so you can enjoy luxurious and classy taste.



◀ **Melonpan (190yen)**
Crispy outside, fluffy inside, very nice texture! Nomal one is of course good but especially freshly baked one is delicious.

▶ **Apple Pie (280yen)**
It is a sweet with plenty of apple filling in pie cloth using European butter.



Fluffy texture and rich buttery flavor

As the store name shows, this restaurant is full of fancy interior that mirrored the image of New York. Space between seats is wide, so you can spend time relaxingly. At dinner time, you can order juicy meat and various alcoholic drinks. You can enjoy lunch, cafe and dinner as well there.



New York Garden Place
hug
Fashionable
cafe restaurant

◀ **Honey Danish**
Hug's popular menu is Danish. It uses the original Danish and is characterized by strong sweetness. The moment you put it in your mouth, the flavor of butter spreads and you'll feel happy. It has excellent compatibility with ice cream. There are 8 kinds of menus of it, so you can enjoy choosing them. Among them, the most popular one is "Honey Danish" and gentle sweetness of honey goes well with the Danish.



▶ **Various alcohol**
There are plenty of drinks including beer from around the world, wine and fancy cocktail.



Welcome FREE CAFE @ Rokko

There are a lot of things that university students have to do. For example, homework and a report, test study. However, we can't concentrate on studying at home and it is hard to stay too long even if we go to the shop to study. Furthermore, certain BUCKS which university students love is not in Rokko. There is the free cafe that meets a trouble of such the God University life in Rokko. I introduce two attractive cafes for such a university student.

PRECIOUS



It is along the way in the place that I climbed on from Hankyu Rokko Station. There is a bicycle parking lot, so I can go by bicycle and by motorcycle. If I make a reservation, you can charter it. The group of a great number of people can make a meeting. You can use it freely after the second or later visit if you do a sign-in by an email in the case of the first visit.

Attraction of free cafe

○ You can easily enjoy

After having ordered one drink free, you can spend it entering the shop freely. There are people who come to study alone or to kill time with their friends, to make the meeting of the student group. There are many attractive points, such as the nice service including the outlet for Wi-Fi and charge is substantial in spite of a free cafe. The comfort makes it a good place to spend time.

It seems that student groups are Shing and discussing. We also used.(PRECIOUS)



State in the shop.
(PRECIOUS)



◀ State in the shop. (SHIRU CAFE)
Separately from free coffee, they sell the cakes. (SHIRU CAFE)

SHIRU CAFE

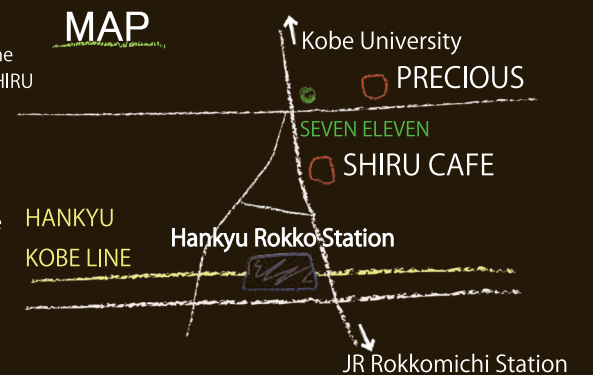


This is the shop on the north side of Hankyu Rokko station. You can drink one cup of drink for free and order another drink and cake by an additional order elsewhere. If you download an application in the case of the first visit and do a sign-in, you can use it by the presentation of an application screen and the student identification card from next freely.

○ Lead to future discoveries

There is also a purpose of offering a comfortable environment to college students and supporting their job hunting in the free cafe. You can think about your future casually through the events that everyone can participate. Information is on the home pages and Twitter, etc...

MAP



store : PRECIOUS 神大前 六甲店
address : 〒657-0063 兵庫県神戸市灘区 曾和町 3-1-4 グラスビルコート 1F
mail address : precious-sr@en-precious.jp
open : 11:00-21:00 (close on weekends and the holidays)
※We sometimes hold some events on weekend and the holidays, for any details check out the information on the home page.
seats number : 80 seats
access : 5 minutes on foot from Rokko Station
home page : en-precious.jp
Twitter : @PRECIOUS_KOBE_U



store : SHIRU CAFE 神戸大学前店
address : 〒657-0064 兵庫県神戸市灘区山田町 3-1-15
TEL 078 - 854 - 8650
open : 11:00-21:00 (L.O.20:30/close on weekend and the holidays)
seats number : 77 no smoking seats (we have some counter)
access : 10 minutes on foot from Rokkodai campus. 1 minutes on foot from Rokko Station.
home page : shirucafe.com
Twitter : @shirucafe06



Enjoy Japanese Sweets

These days, It is very cold.

Why don't you enjoy Japanese sweets with hot tea to warm your body and mind.

Japanese sweets

During the winter, you can enjoy Japanese sweets more. This time I will introduce the wonderful Japanese sweets sold in the Kameido Sohonten Rokkomichi branch, which is near Kobe University.

瓦まんじゅう

Kawara Manju

First of all, I would like to introduce this. Various patterns such as Aoi, Kaede, Kikusui are treated, and they can be enjoyed even just by appearance. This winter, please enjoy the exquisite harmony between moist bean paste and fluffy castella dough.



Kameido Sohonten Rokkomichi branch is a 30-seconds walk from JR Rokkomichi Station in the Prico Rokkomichi.



瓦せんべい

Kawara Senbei

They are made of eggs, sugar and flour. They have a crispy textures and soft sweetness. You will love them so much. Futhermore, we can enjoy the design of the samurai riding a horse. His name is Masashige Kusunoki and he is famous for his bravery.



吹きよせ

Fukiyose

These are very pretty looking sweets in the motif of nuts and leaves gathered by the winter wind, These are carefully made, so of course the taste is also excellent. Please do try them.

Green tea

I will tell you the best way to enjoy a cup of hot tea this winter.

Firstly, start with preparation

Prepare materials for the number of people.
Take care of the temperature of the hot water.

Preparation (for two people)

- Amount of tea leaves ... 4 g
- Amount of hot water ... 120 cc
- ※ The temperature of hot water ... 70 ~ 80 °C



Step1

Pour hot water into a cup and add tea leaves to a teapot.

In advance, pour hot water into the teacup to warm the cup, which prevent the hot tea from getting cold.



Step2

Pour the hot water from the teacup into the teapot and steam the tea leaves.

Slowly pour hot water into a teapot.
And steam tea leaves until tea leaves open.
(about 1 minute)



Step3

Pour so that the concentration of tea is equal.

In order for the tea to be served equally strong, you need to pour it little by little and evenly into the cups.

Completion

Why not enjoy the deep flavored tea with sweet Japanese sweets this winter?



power spot
1

Sannomiya and Kitano (1) — Streets full of exoticism

Kitano Ijinkan /
Nunobiki Waterfall / Ikuta Shrine



"Kitano Ijinkan" is where many people come to seek the atmosphere full of exoticism.

Why do not you go around the power spot while enjoying the street as if you came to a foreign country?

power spot in Kobe
01

"Representative Ijinkan Uroko House"

— Experience the feeling of luxury at that time of living



In the garden there is a bronze statue of a boar which is believed to bring you good luck if you rub its snout for long time.

Catch the good luck with Porscherino boar!

► It was firstly opened as Ijinkan in Kobe. Because the outer wall resembles scales, this house called "Uroko (scales) House" is still felt at the time when it was a luxurious rental house for foreigners.



power spot in Kobe
02

"Mysterious space Yamate Hachiban-kan"

— A quiet exhibition space

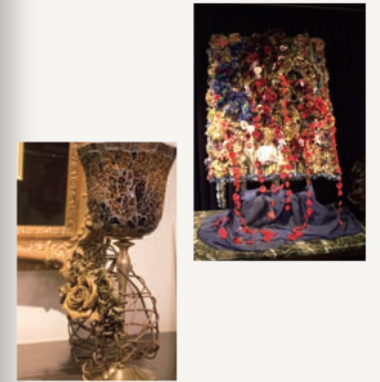


▲ Yamate Hachirokan was originally built as Mr. Sansen's house. At the entrance, a huge statue of Nio greets you. It is a Tudor style pavilion featuring quirky architecture consisting of three tower houses.



The "Saturn's chair" with the Saturn sculpture, a god of grain tolerance in Roman myth, is known as "a chair where wishes come true when sitting".

Wish upon a Saturn's chair



▲ In the house, exhibits such as sculptures of the master and Buddha statues of Asia line up, and the mysterious space spreads out.

Also recommended here!

There are various other interesting places of Ijinkan.

Besides power spots, there are places where you can enjoy such a way!

power spot in Kobe
03

"Kobe Mysterious Consulate of Trick Art"

— Get in a magical space



The inside of the hall is designed to be able to experience various trick arts, it is perfect for photography! It is fun to not only see but actually enter the mysterious world.

Photo trick art!



power spot in Kobe
04

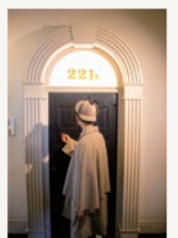
"British House of Sherlock Holmes"

— You can enjoy the view of the world

In "British House", the room of famous mystery novel "Sherlock Holmes" series has been reproduced. Fans will be excited about this faithful reproduction based on the depiction of the work.



▲► In the house, you can wear the Holmes costumes!



“Holy space in the city center - Ikuta Shrine”

- A sacred space quietly standing in the hustle of the city



“Ikuta Shrine” is a shrine famous for marriage and love fulfillment. Why not mention the history of 1800 years while walking in the shrine?



Funny Omikuji that fortune will emerge when you soak in a pond in “Ikuta no Mori” behind the shrine. Ikuta Shrine's hydromancy is credited with winning! Please try your love luck by all means.

Your fortune will float on water!



▲ "Inari shrine" located on the northeastern side of the Ikuta Shrine's premises. It is a shrine that festivals God of living guardian, food and rice.



◀ "Ikuta no Mori" is located on the northern side of Ikuta Shrine. It was a quiet space that I could not imagine being inside the city center, I felt like I was in a different world.



◀ A pond in “Ikuta no Mori” . It is also a place to immerse hydromancy. Let's try your fortune here.

“One of Japan's Three Waterfalls of God; Nunobiki Waterfall”

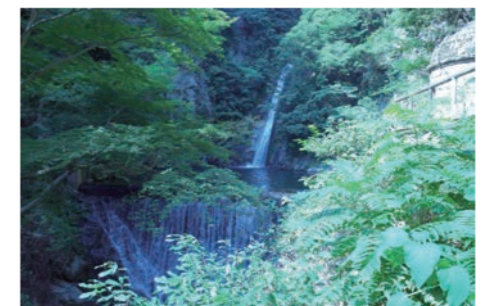
— Another world that nature hidden in the forest of the building builds



Beautiful natural scenery inside the city center "Nunobiki Waterfall". Do you take the power unique to nature from this waterfall with magnificence and power in beauty?



◀ Nunobiki waterfalls comprises four separate falls: Ontaki, Mentaki, Tsutsumigadaki, and Meotodaki. It is located in nunobiki mountain stream of the Ikuta River. It is one of Japan's three waterfalls of god and chosen as 100 selections of Japanese waterfalls.



Nunobiki waterfall became the stage of many literary works including "the Heike Monogatari" and "Eiga Monogatari". Mentaki of the photograph pulled a white thread elegantly as if it hung down one piece of white cloth on 19 meters of drops, granite bedrock which ran, and the given name of "nunobiki waterfall" was born from a state to run.



▲ "Ontaki tea shop" is a place where you can take a break while overlooking Nunobiki Waterfall. Why do not you eat delicious dishes of "Ontaki tea shop" while watching the beautiful scenery of Nunobiki Waterfall? Recommendation is deeply impregnated oden of taste.

Can you believe Kobe city area is near ?

power spot
2

North Kobe — Historic hot spring town

Arima Onsen
(Arima Hot Spring)



Arima is a town that has been named as a hot spring town since long ago.
Why not try spotting a power spot while enjoying various spots as well as hot springs?

power spot
01

"Arima Inari shrine in the nature"

— A majestic and historic shrine that gives healing



▲ Hillside of Mt. Rokko. There are plenty of growing trees around. They will heal you from the hustle of the city.



I felt relaxed by the building that made me feel history such as torii. It is said that there is an advantage such as disease-free breathing when you visit the Inari Shrine as it is a guardian deity of this Arima shrine.

Pass through the red torii

power spot
02

"Famous hot spring with history Kin no Yu"

— A hot spring loved by various great men such as Toyotomi Hideyoshi



Relaxing atmosphere of bathroom with Kin no Yu. The hot water was slightly hot, but it gets warmed from the core of the body as we enters it. Three kinds of temperature baths will prevent hot flashes, so it seems that they will be long hot water.

Traditional hot springs inherited



▲ You can enter the footbath outside, for free, and it gives us warmth from the coldness of winter with exquisite hot water.

power spot
03

"A hot spring to heal tiredness Gin no Yu"

— Recently renewed Arima's rest water



Gin no Yu renewed in 2015 is a carbonated spring, hot water using Radium spring. The hot spring in the bathroom, conscious of the bell tower, sauna is very comfortable and the best.

Relax your mind with the Japanese style



▲ A Japanese style that is adapted to the neighborhood where the surrounding shrines and temples gather is relieved.



power spot
04

"New landmarks Masu masu Koi koi Shrine"

— Love fulfillment, married shrine

◀ The shrine whose name is such a funny being built in "Arima masuike" in 2012. The god of deceit is Okuninushi who discovered Arima Onsen, familiar as Izumo Taisha Shrine God.



▲ In the park, we were able to fish rainbow trout and could cook fished rainbow trout and eat it. It is a shrine wrapped in a soft atmosphere with a low threshold in a good sense though it is a shrine. The visit is limited to the opening of "Arima Masuike" (Fishing and rainbow trout deep fried food). A closed day requires Arima Pond search.

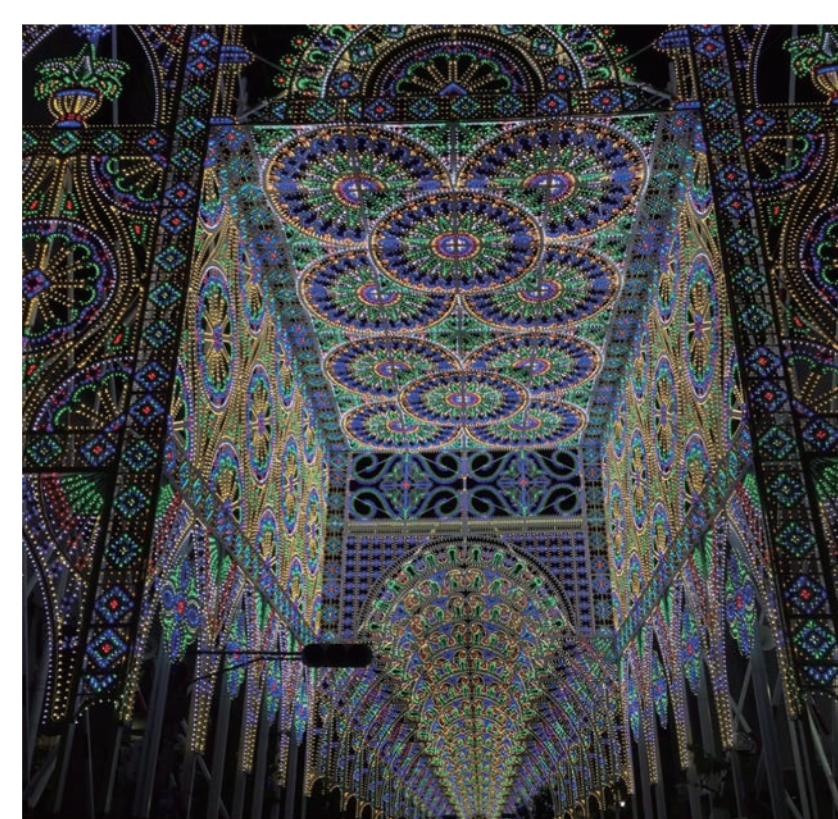
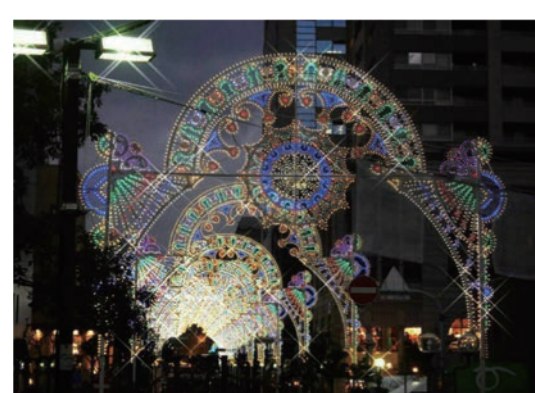
power spot
05

"Old souvenir shop Yoshitakaya"

In this shop which continued from the Meiji era, Arima's unique products and original goods are lined in a narrow space. Also, the inside of the store makes you feel like you are in the past and will makes and you feel like following the footsteps of Arima's history.



Things to do in Kobe at night !!



Kobe Luminarie

Kobe Luminarie

This illuminations event has been held every year in December, starting a year after the Great Hanshin Earthquake which occurred in 1995. It started as a prayer and a symbol of hope for the victims of the earthquake, but has become more a tourist attraction in recent years and has been attributed as one of the highlights of winter in Japan. From 2012 onwards, all the lights have been changed to LED which resulted in more enchanting light displays for the enjoyment of the public.
Access : 10 minutes on foot from JR Motomachi station.

Kobe Illuminage

Kobe Illuminage is an illumination event performed at Kobe Municipal Fruit & Flower Park. In the daytime, you can enjoy the European medieval architecture and flowers, which change according to the season, while waiting for the illuminations to start in the evening. As it lights up, the whole area transforms into a sea of glimmering lights imitating a starry sky like you have never seen before.

Access : 35 minutes by bus from Sannomiya station.(only on weekends/ public holidays)
※There is a free shuttle bus from JR Sanda station for a limited time period.



Kobe University Centennial Hall

The night view spot which you can go most casually is Kobe University Centennial Hall which was constructed to commemorate Kobe University's 90th anniversary. It hardly gets crowded which makes it a great spot to get a panoramic view of Kobe, be it during the day or at night. Maybe you can drop by there on your way home or enjoy the view while going down the slope heading towards Hankyu Rokko. When winter comes, the sun sets earlier than usual. This means you get to see the night view after class or club activities without waiting too long compared to in the summer which will surely help in reducing fatigue and lightening up your mood.

Kobe University Hall



KIKUSEIDAI

One of Japan's top three night views!



KIKUSEIDAI

The name this place originated from the saying "the mountain where the starry sky is so beautiful that you can scoop up the stars with your hands", indicating that the lights of the city are like stars in the sky. The night view from Maya Cable situated about 700 meters above sea level, which can also be called "the stellar station" is like a jewelry box. The view also looks beautiful from the cable-car and the ropeway. When the weather permits, other than Kobe and Osaka, you might even see Wakayama district.

Access : 30 minutes by bus from JR Rokkomichi

Venus bridge

Since the Venus Bridge is relatively near to Sannomiya and the altitude is low, you will be able to witness a breathtaking night view of Kobe city. It is said that when you go there with your crush and lock padlock together, the relationship between the two of you will be official. Hence, making it a famous dating spot. Since you will have to walk down a mountainous path before reaching the bridge, you are advised to avoid wearing heels when walking there because the path can be slippery.

Access : 15 minutes by bus from Sannomiya Station and another 15 minute walk after getting off the bus.



Venus bridge





Service Center

From travel and ticket arrangements to room searching and driving school registrations, we strive to enrich your university life.

Rigid beneath the university life

It is convenient that there is a service center, commonly known as "sasen" in Japanese whenever you feel like going on a trip with your friends because all reservations can be made here. Making travel arrangements seem troublesome, but the "sasen" makes it very convenient because you can get a consultation on campus. Also, because there are many travel brochures, plans can be easily set up even with a little bit of interest! They also help with ticket purchases and car licenses. They help even with the little things, so feel free to drop by.

◀ There are lots of different pamphlets for similar trips, so it's easy to compare and find the best one for you! Actually, I also find it useful when traveling.



What can be done at the service center

- Shinkansen reservations
- Travel arrangements → They also have brochures so you can easily plan your trip.
- Tickets for Koshien and Takarazuka
- You can buy tickets for baseball games and performances of theatrical companies at student prices.
- Driving school applications
- Many people apply every year, and it's full of students during summer vacation

Stay close at everyday with partners

The cafeteria at Tsurukabuto 1st Campus may be the cafeteria you most frequently use. The menus that are offered are wide, plus it is more advantageous than general eateries. If you have about 400 to 500 yen, you will have a full stomach, and a healthier meal. At lunch time, it is crowded with many students, so there might be a long queue during lunch break. Therefore, some people eat lunch boxes called "Hokkaru Bento" which are sold outside the cafeteria.



Cafeteria

We provide safe and delicious food service for our members.

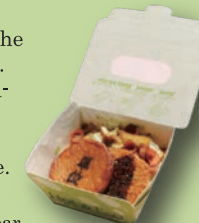


◀ ▲ Actual cafeteria menu
Main dish and side dishes are provided separately, so you can eat what you want as much as you want. For example, you can easily combine one dish and three vegetables.

What is "Hokkaru Bento"?

A university original lunch box, which is sold outside the cafeteria for about 300 yen. It is nutritious and containers can be recycled, so it is friendly to the environment, your health and your purse.

* The picture on the right is the limited-time menu GI invented last year.



University life with CO-OP

Do you know about "CO-OP"? Co-op is a nonprofit organization that backs up your campus life in various ways. In this article, we will introduce the facilities provided by co-op in the 1st campus of Tsurukabuto 1st campus which will be used frequently during the first year of university.



Bookstore

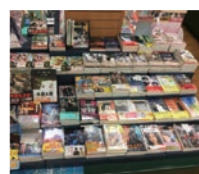
Regardless of genre, they offer at a cheaper price than usual.



◀ The book department at the student hall of Tsurukabuto 1st Campus

Support student's study/hobby

Co-op's bookstore sells not only textbooks and reference books but also novels, magazines, and comic books. Nearly all books in the shop are sold at a discount of 7%, so you can buy books with great advantage. By the way, there are bulletin boards for introducing part-time jobs inside the store so you can visit when you have trouble searching for a part-time job.



◀ There are plenty of books, including new books inside!! The photo shows the "in trend corner", and at a glance you can tell what kind of books are popular now.

Staying close to you everyday

Whenever you need something in college life, you'll go this place. There are stationery, food and drinks, etc. There are also copy machines, an ATM and counters where you can receive various services such as repairing personal computers for free. The store on Tsurukabuto 1st campus is the biggest in Kobe University, so why don't you try using it?



◀ ▼ A wide variety of items such as majoring tapes and work clothes, stationery such as compass and loose-leaf, earphones, etc. are available!!

◀ Not only everyday items, they also sell rice balls, bread and boxed lunches, so you'll never be left starving.



CO-OP'S Store

We support studies and research widely through products and services.

Unusual products

- protein shakes → It seems that people who are in club activities buy them
- Kobe Univ Goods → It seems that people who come for the open campus, etc. will buy as a souvenir.
- Business suits → Your last resort when you forget!!
- soft balls → There are many people who buy this to play during free periods.

Let's use the part-time job listing board!



When university life begins, a lot of people think about starting part-time jobs. In such a case, you can use this part-time job bulletin board!! Enter the bookstore and it is on the left. CO-OP introduces a safe and secure part-time job!

Cafeteria for international students



LANSHALAL Vege Dining

LANSHALAL BOX 2F
Rokkodai 2nd Campas

How to go?



UP!

Go up stairs

GO 2F!!

About

This cafeteria aims to accommodate requests of international students for more diversified diets. After lunch time, you can use the space as a place of recreation and relaxation or a place to chat with Japanese students.

Good Points !!!

- Considering international students
- Be assured that halal, vegetarian(vegan)
- Gluten free dishes are available.
- Coffee server
- Beautiful Scenery

Information

- Open from Monday to Friday
- Open hours 11:45~13:00
- The hall room is open 13:00~18:00

MENU

Deep-fried chicken ▶

It is the most popular menu. The source changes on a daily basis. Because flour is not used, gluten free one is okay.



◀ Potatoes, vegetables and beans soup

Vegetarian (vegan) is okay because we simmered potatoes, carrots, etc. with soybean and used tomato flavored vegetarian consommé. Consommé is not using flour, so gluten free one is okay.



生協食堂 COOP MEALS ちよい足し PLUS

If you are accustomed to college life, you may think that you want a new menu or new taste in the cafeteria.

You can make that wish come true with a little ingenuity!

In this page I would like to introduce the arrangement menu which added "just enough" to the usual menu of the cafeteria.

Please try to arrange meals on your own with this "little addition" menu!

All editors' Recommendation !!



スライスオクラ+納豆+温泉卵+中ライス (¥263)
SURAIKU OKURA + NATO + ONSEN TAMAGO + RAISU

A refreshing bowl featuring sticky texture

A bowl of rice combining small bowls in the dining room, which put onsen hot eggs in a combination of okra and natto's "nebaneba".

It is a stable pair acceptable to all.

The 'little addition' menu that makes the rice easier to eat owing to the okra's sense of stickiness.

Editor's comment

This volume at only 245 yen! The cost performance of 100 yen cheaper than usual bowl is attractive, both the amount and the taste are perfect!



塩カルビ丼+納豆+七味 + マヨネーズ (¥421)
SHIOKARUBIDON + NATO + SHICHIMI + MAYONE-ZU

Aftertaste not persistent, and a cup full of guts

Salted carp bowl is a casual chopstick in bowl. What will happen if such a bowl of rice and mayonnaise meet? It changes to a rice bowl without trouble. Although it seems that it may be more delicious in mayonnaise, salt dale, Nanami and Natto are put together so well that they do not quarrel the whole taste, and it has transformed to the supreme gem.

Editor's comment

Even the common choice of mayonnaise was delicious as there was a change in the taste with the seasoning. Worth trying!!

Recommended by this editor !!



白湯ラーメン+ミニサラダ (¥388)
PAITANRAMEN + MINISARADA

Ramen with plenty of nutritious vegetables

A recipe with a little twist, a bit of vegetables warmed by range in Shirayu Ramen. However, this surprisingly fits. The vegetable "Shakishaki" texture becomes accented, and the rhythm such as noodles → vegetables → noodles → menma makes it faster to squalize noodles. Because you can get a feeling of fullness with just this cup, you may not be able to return to the usual menu

Cafeteria staff recommend !!



Editor's comment

Since there was no idea of warming the salad, it was surprising when I was told at the beginning. It is not strange quality even if it is in a ramen shop.



WHAT IS GI?

"GI" stands for "Gakusei linkai" (It means student committee) and is in cooperation with Kobe University CO-OP.

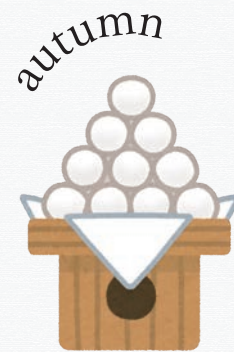
We build up various plans for how to make the college life more comfortable, through the eyes of students.

On this page, we introduce you the part of our activity of the last year!



▲Uribo

We made a booklet about the college life for every freshman to support their study, part-time job, lodging etc.



◀Vintage clothing store

We sold clothes donated by Kobe University students in the university in aid of foreign countries. By reclaiming and reusing clothes it was an eco-friendly project. Thankfully it was very well received!!



◀Freshmen welcoming party

It is a project that we do every year. We have two large-scale freshman welcoming events in the end of March ahead of usual freshmen welcoming party beginning in April. This year we held "RIDE" in which we performed recreation in 2 days and 1 night, and "STEP'18" in which we went around Rokko and Kobe University on a single day!



Escape Game ▶

We held a full-scale escape game with Kobe University Broadcast Committee (KUBC)!! The game was enjoyable even for beginners and we were able to provide a good time to the participants.



◀Foot bath

To keep students warm in winter, we held a foot-bath event. As well as foot-baths, we offered hot drinks. A great way to relax during the cold winter months.



Lottery ▶

Using the receipts from the CO-OP stores, everyone was able to participate in a lottery. It was easy to participate, and so 2,753 people took part in this event.



◀Students Consultation

We held a conference for the examinees! We answered their questions and guided them around the campuses. We made them and their parents happy by providing them a valuable opportunity to ask questions to Kobe University students directly.



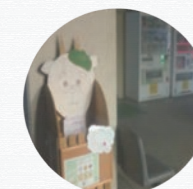
Secondhand book store

We opened a "Blindfold Bookstores" in which the books are covered completely and you choose what you want based on the first sentence of each book.



Device of the dining room menu

We thought about a time-limited menu actually provided at the cafeteria! The above photo is of the Tandoori chicken that we invented.



waste paper recovery

We collect unneeded paper. Please put the wastepaper in collection box!!



twitter
@kobeuniv_gi

▲For more details and exciting information.